



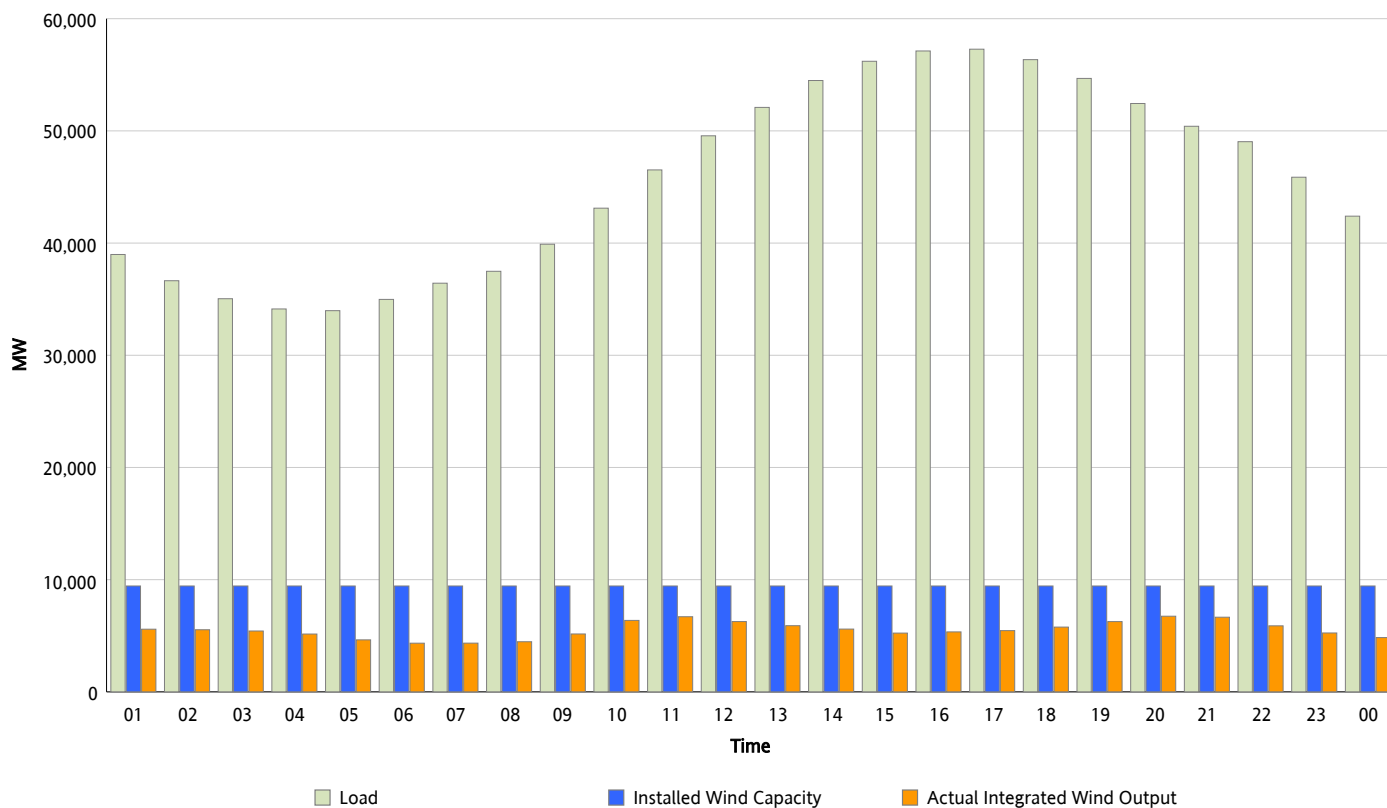
## ERCOT Grid Operations

### Wind Integration Report : 07/03/2012

Peak Load	57,281 MW
Load Peak Hour (HE)	17
Wind Over Peak	5,460 MW
Wind Record 06/19/12	8,368 MW
Max Wind Value*	6,927 MW
Wind Peak Time	19:40
Wind Integration %	13.33 %

#### Hourly Average Actual Load vs. Actual Wind Output

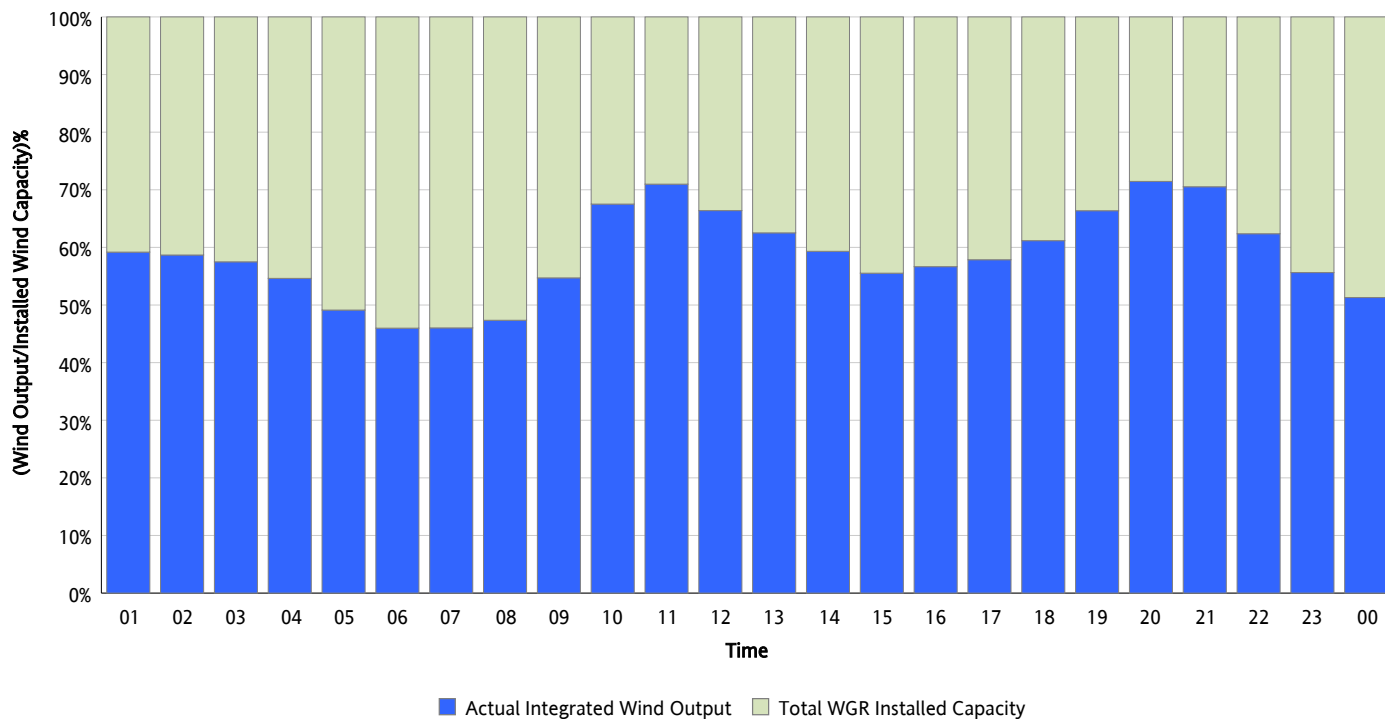
07/03/2012



\* Wind Record and Wind Max represent instantaneous values and the rest of the values are integrated over the hour

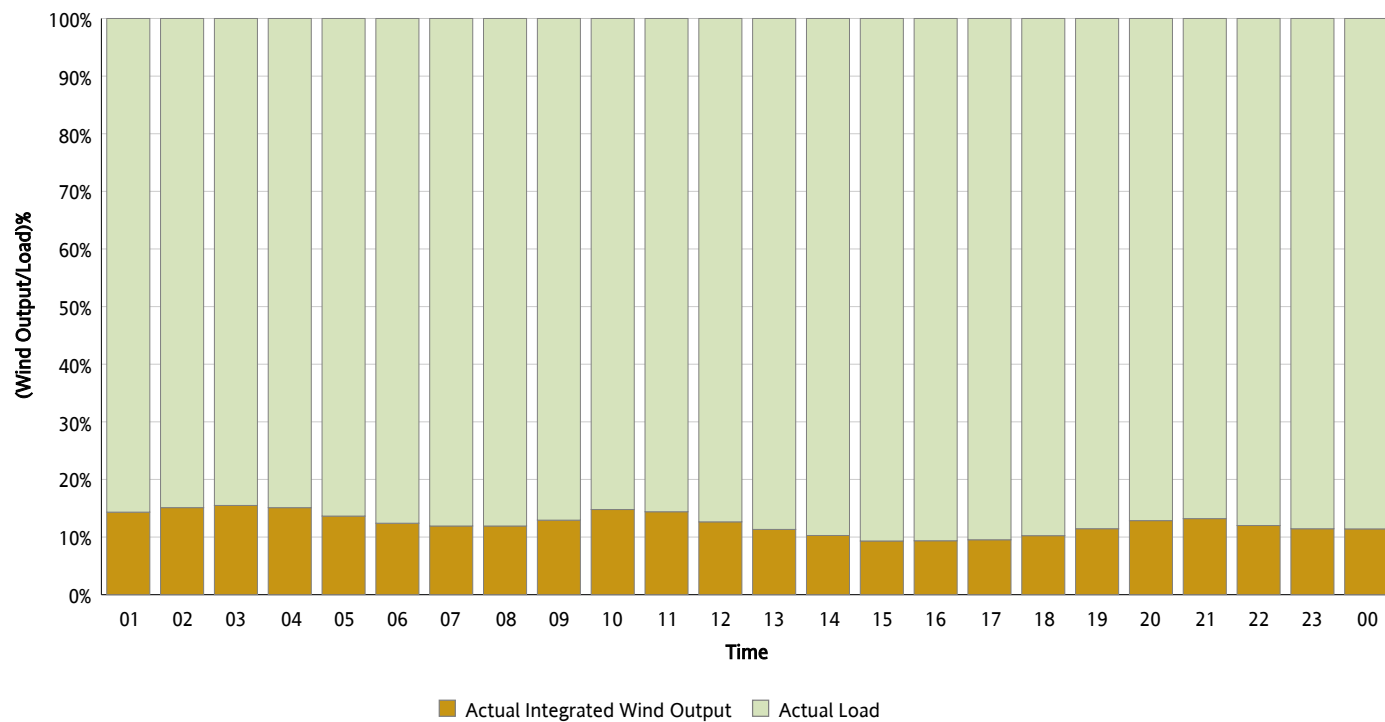
## Actual Wind Output as a Percentage of the Total Installed Wind Capacity

07/03/2012



## Actual Wind Output as a Percentage of the ERCOT Load

07/03/2012



## ERCOT Load vs. Actual Wind Output

06/26/2012 - 07/03/2012

